

Surgery for Valley Fever

Shari L. Meyerson, M.D.

Director, General Thoracic Surgery

University of Arizona

Why would someone need to
see a surgeon about Valley
Fever?

What is it?

- May look like cancer on a CT scan
- May enlarge if followed over time
- Lights up on a PET scan (just like cancer)
- Real problem especially for doctors outside of this area

Not Responding to Treatment

- May require months of medication before improvement
- Some people will not respond to antifungals

Severe Symptoms

- Fatigue and Weight Loss

Severe Symptoms

- Coughing up blood

Severe Symptoms

- Chest Pain

Severe Symptoms

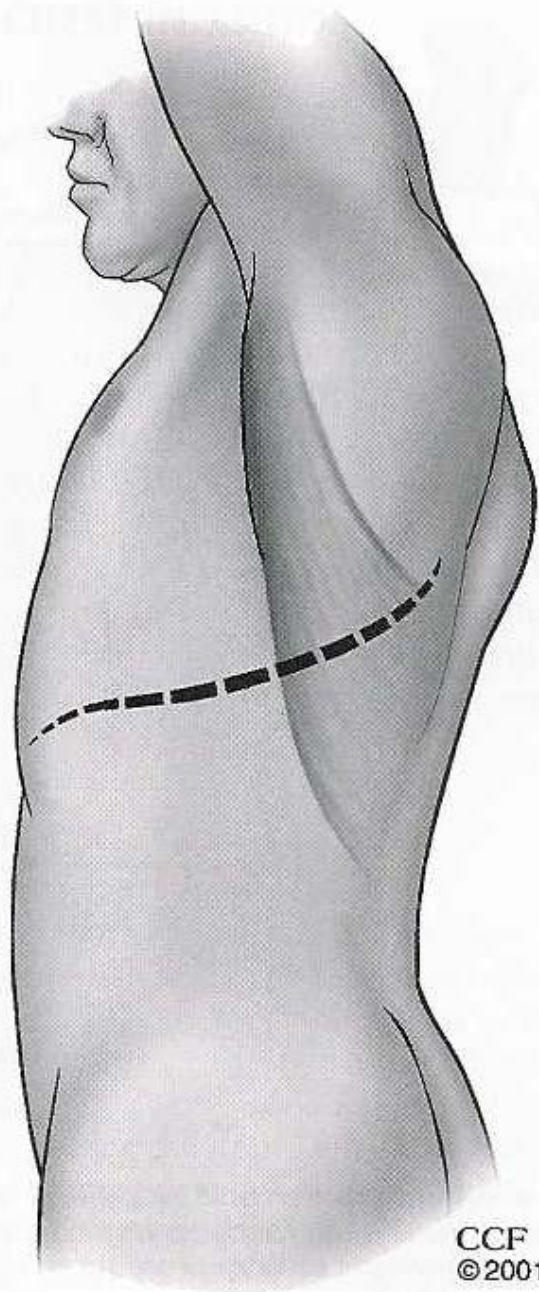
- Infected Cavity

Severe Symptoms

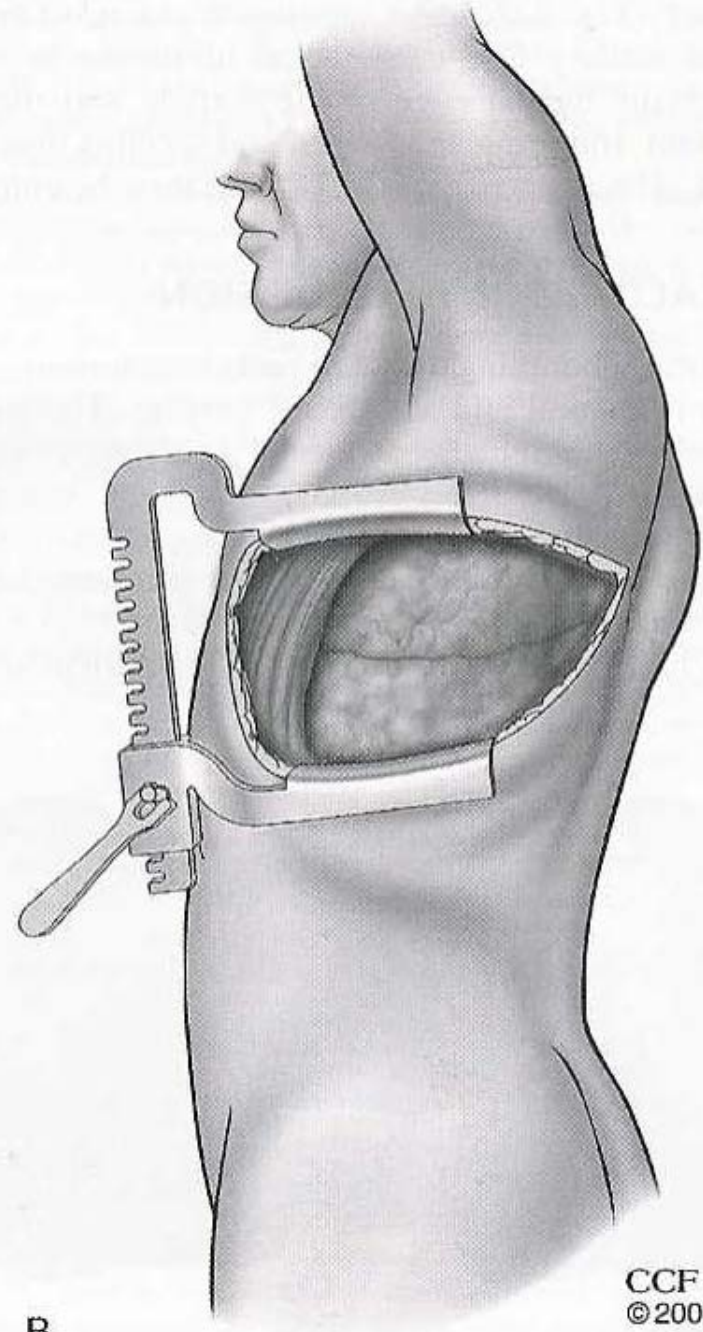
- Ruptured Cavity

Important Decisions

- What surgical approach should be used?

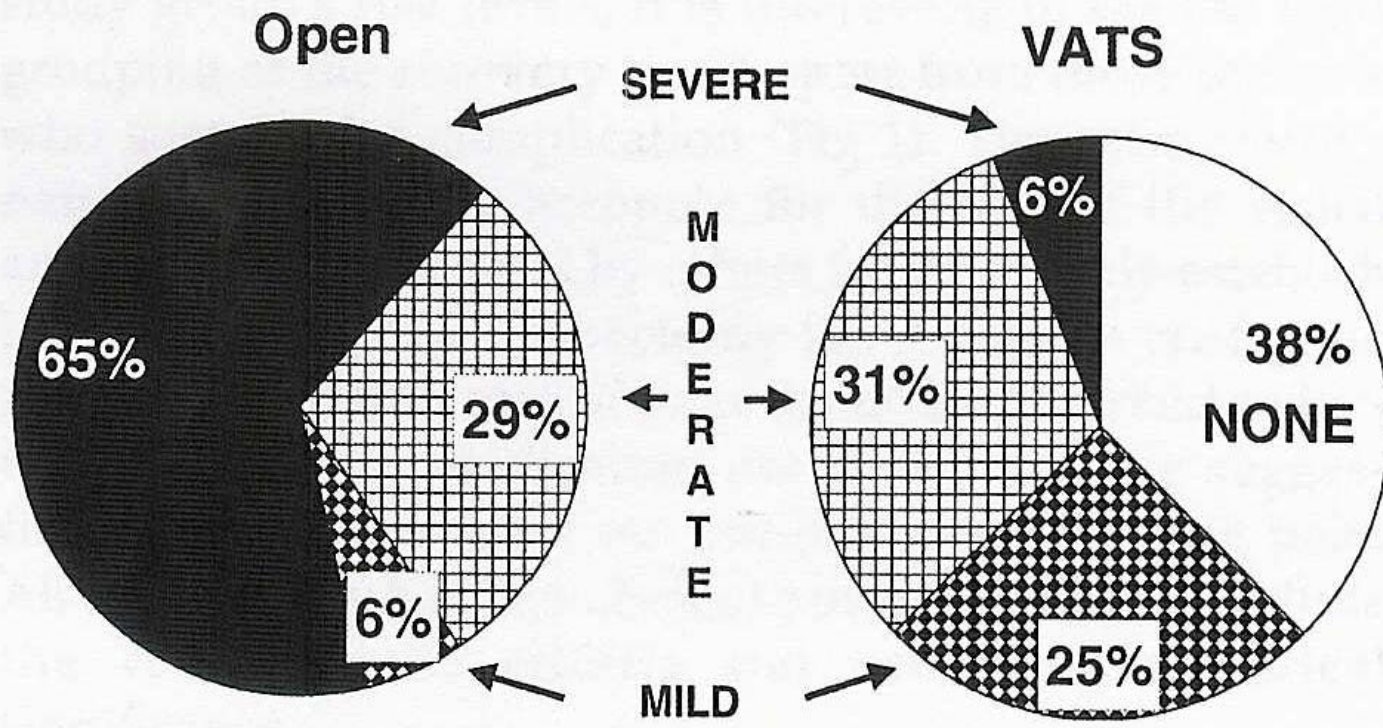


CCF
© 2001



B

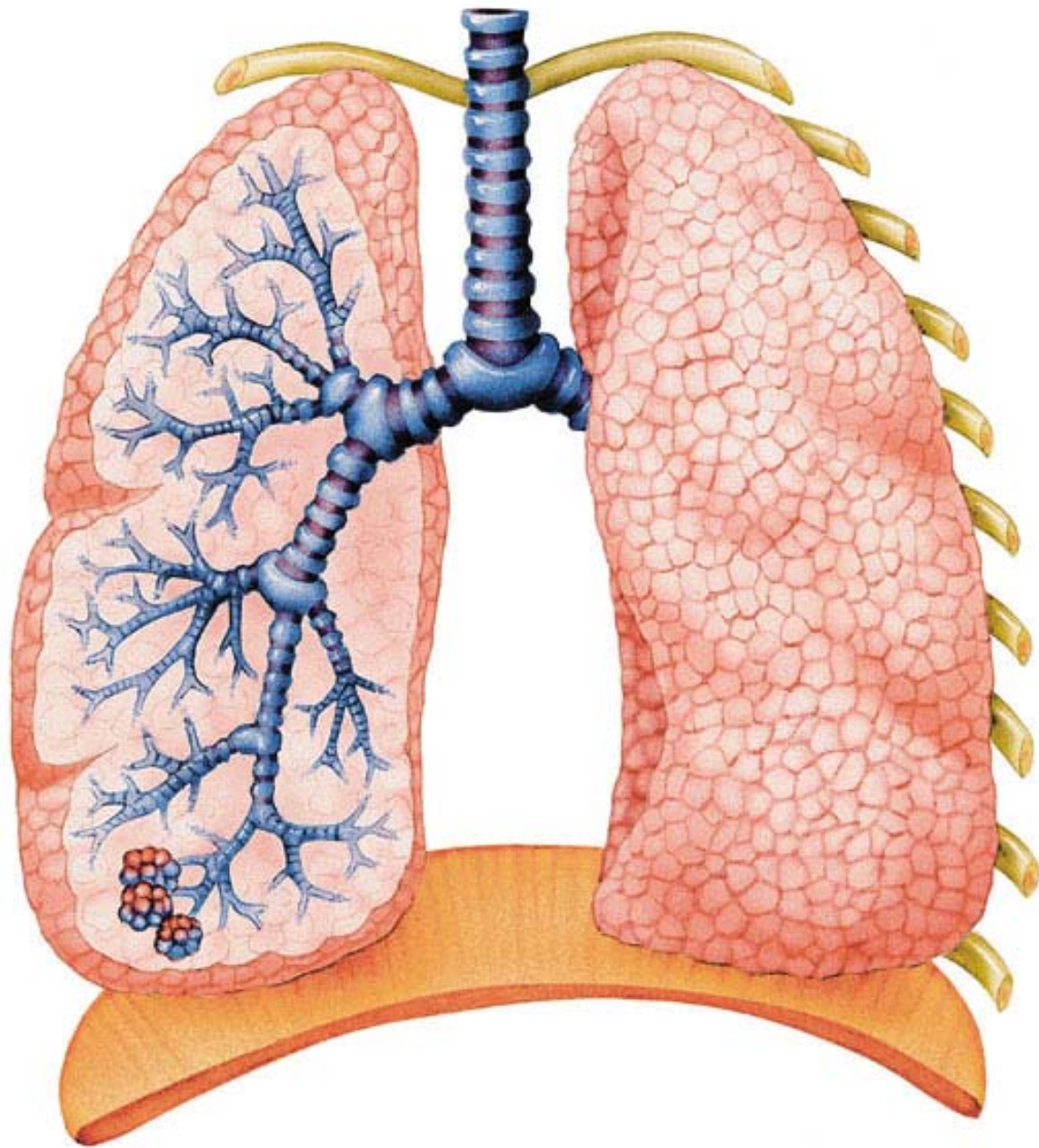
CCF
© 2001

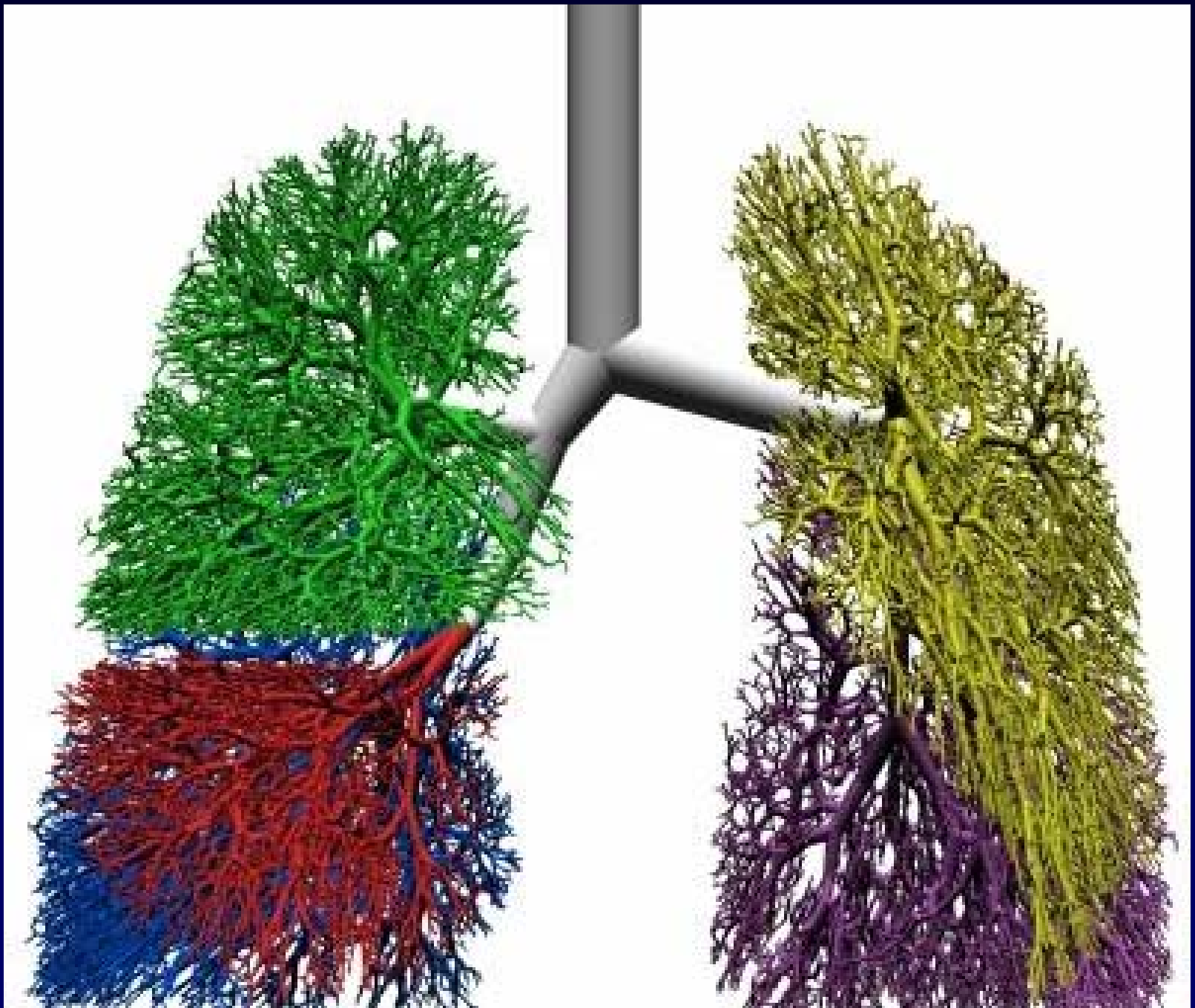


	Thoracotomy (n=38)		VATS (n=20)	
	Care Facility	Home w/ aid	Care Facility	Home w/ aid
Preop impairment	3%	8%	0%	5%
Required OT or PT	3%	11%	0%	5%
Required nursing care	0%	13%	0%	0%
Unable to perform ADL	3%	16%	5%	5%
Unspecified	5%	3%	0%	0%
Subtotal	13%	50%	5%	15%
Dependent discharge	63%		20%	

Important Decisions

- How much lung needs to be removed?





Questions?